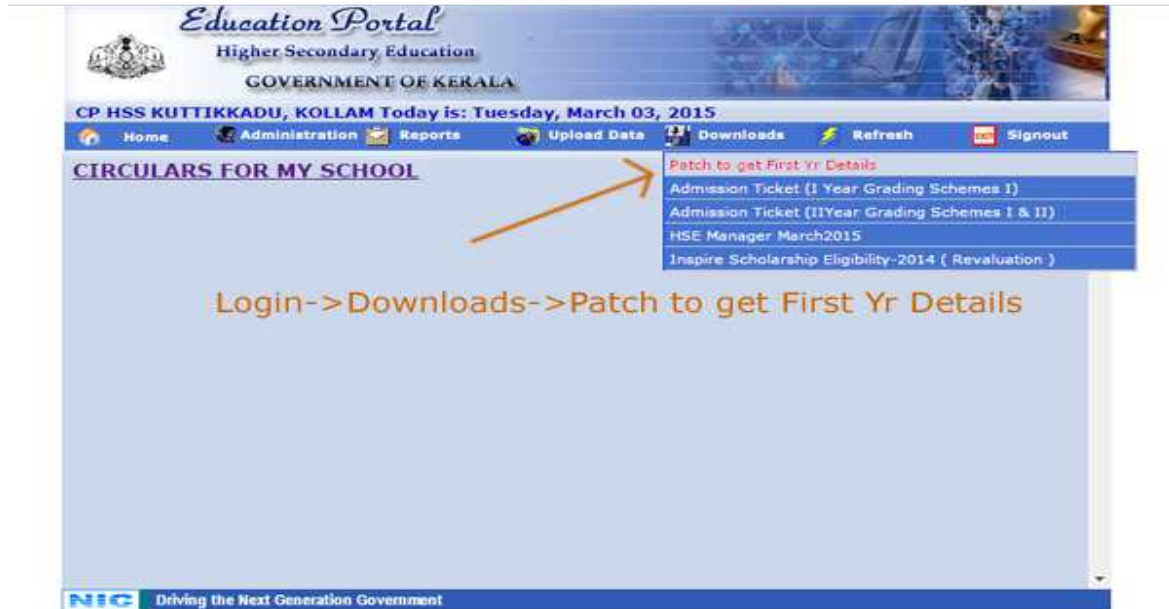


HSE MANAGER PATCH FILE INSTALLATION

Step 1:



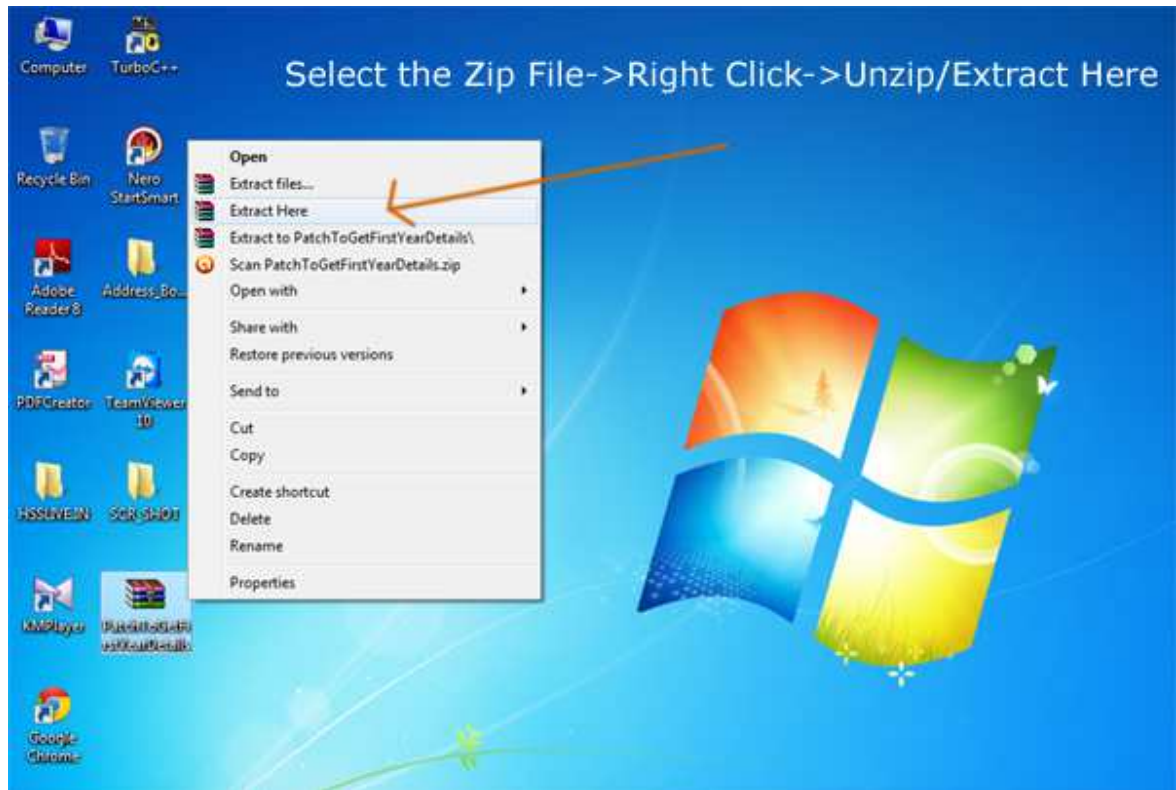
Step 2:



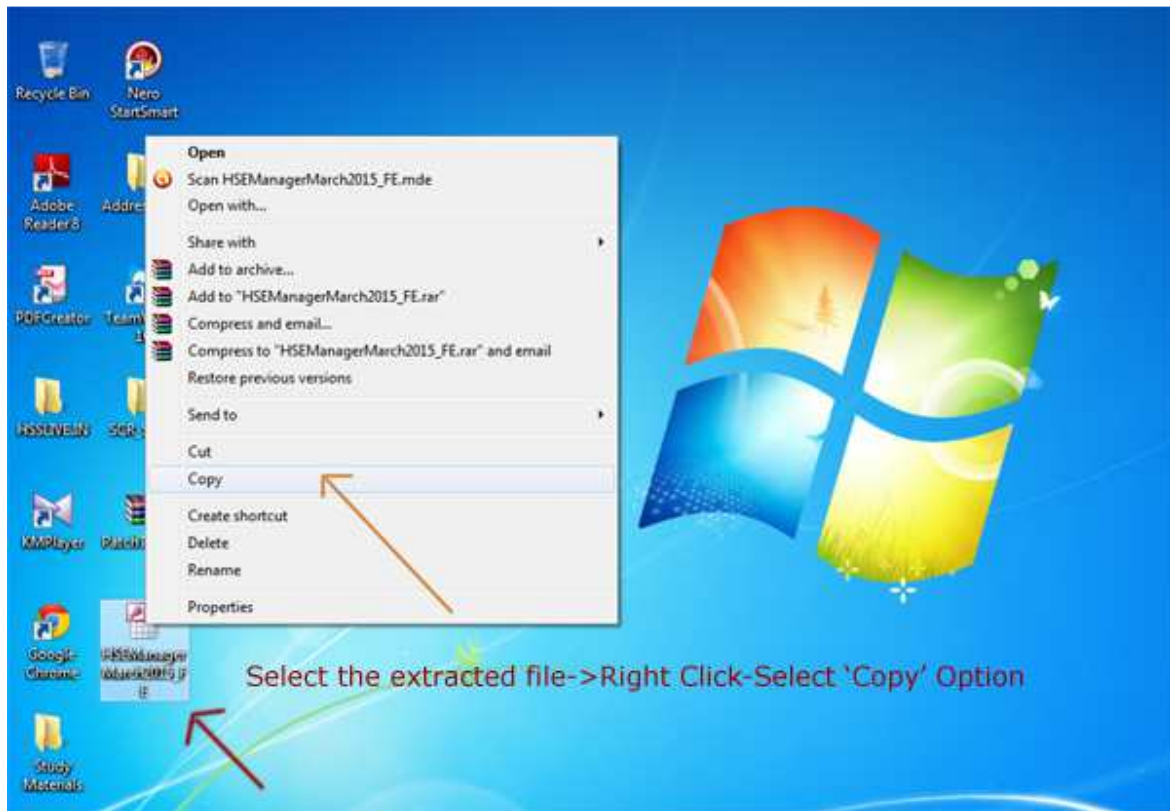
Step 3:



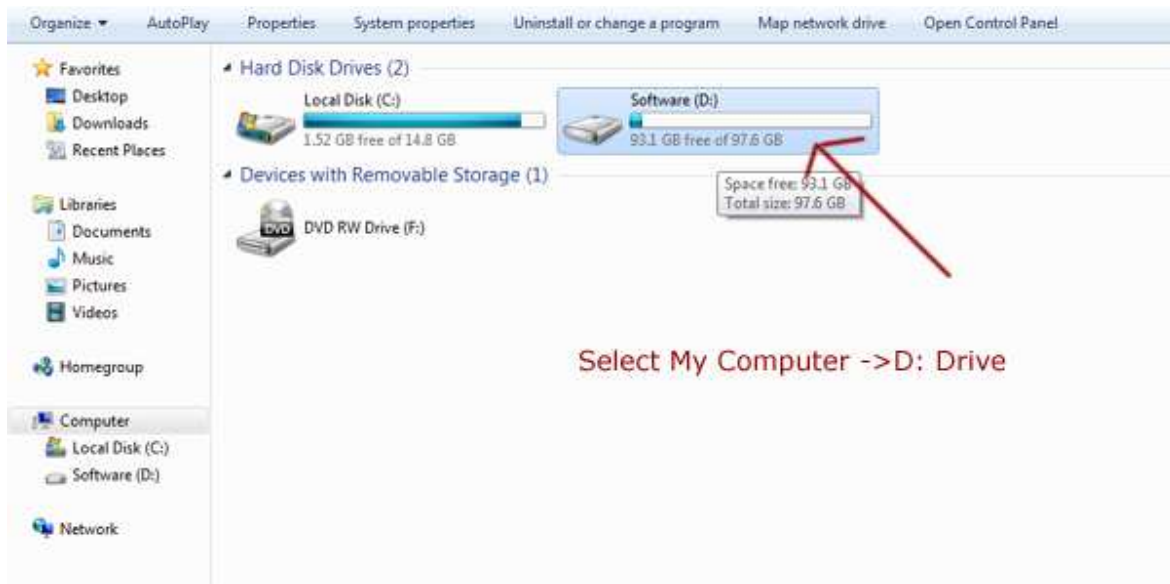
Step 4:



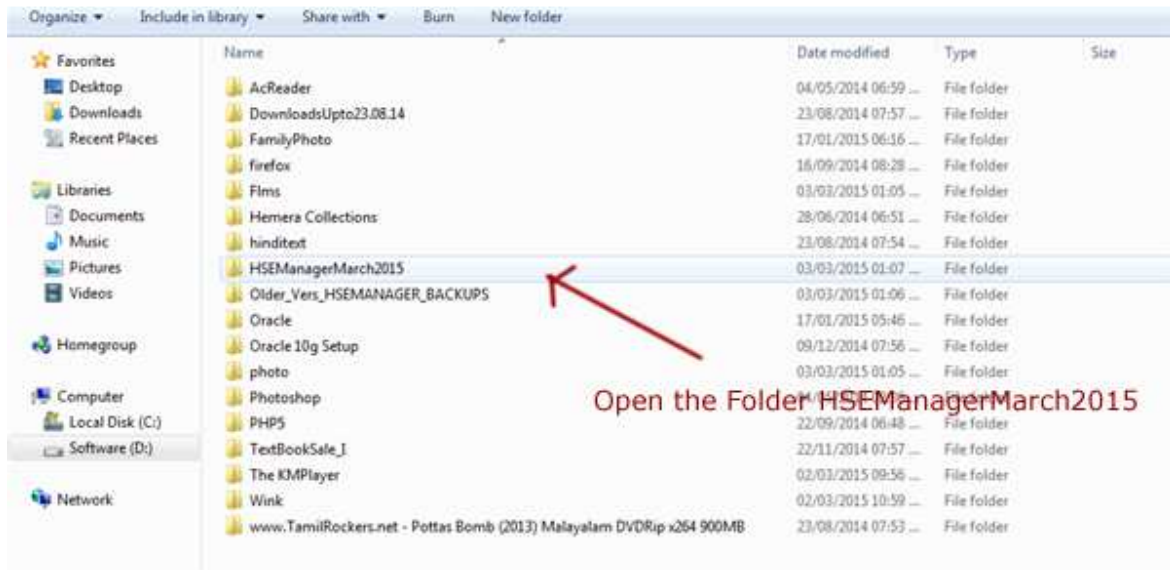
Step 5:



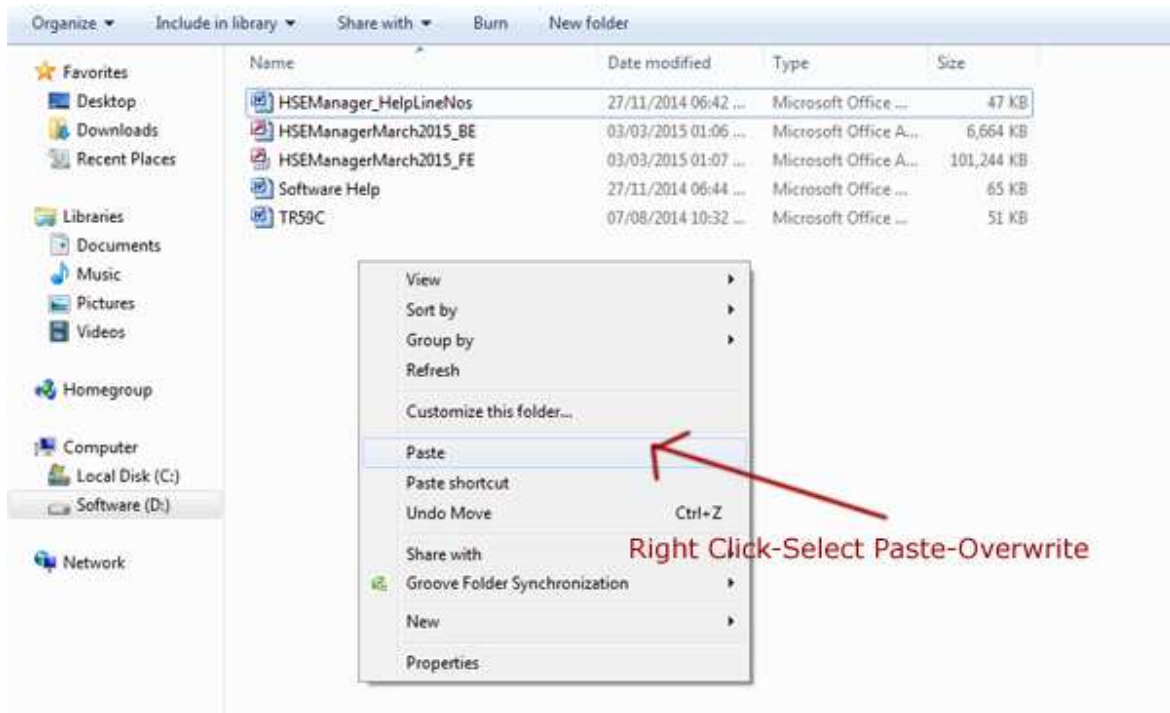
Step 6:



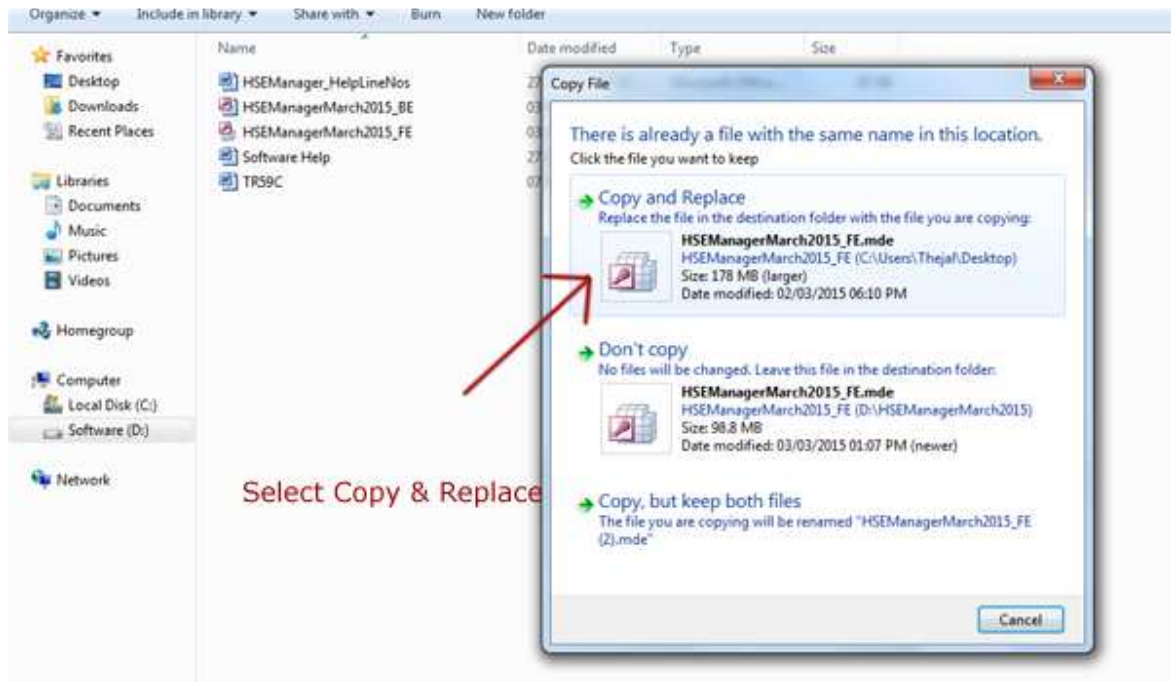
Step 7:



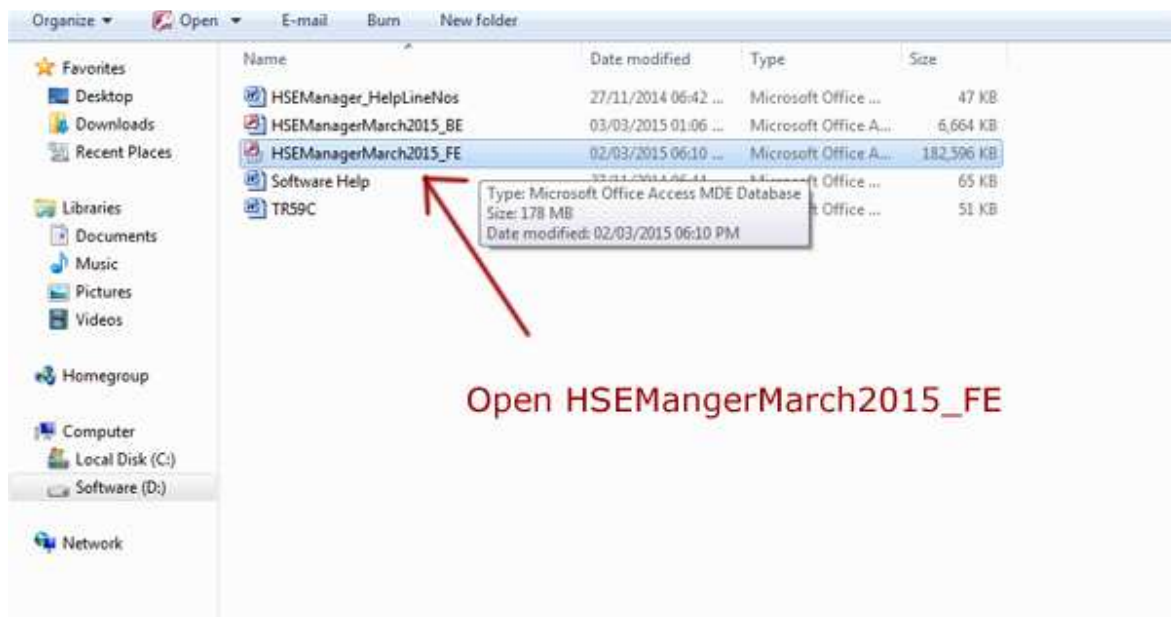
Step 8:



Step 9:




Step 10:



Step 11:

Higher Secondary Examination March 2015 (HSE Centre No:2053)

Click this Button  Add Updated Candidate Details(1st and 2nd Yrs)

Gateway to HSE Manager

Inputs

Staff Details	Absentees' List	
Attendance Practical	Accounts	
Attendance Theory	Practical Meeting TA*	Stamp*


Others

Check List*	Estimate *	About
Night Watchman*	Time Table	Basic Settings
Other Receipts*	Seating	Help
Service Certs. /Rel. Order	Other Duty Certificates	

Outputs


Staff	Attendance	Accounts	General
Final Acquittance*	Conducted Practical Details	Itemwise *	Summary*
Schoolwise	CrossTab - Theory Practical	Remuneration Details*	Packing Slip
Subjectwise	Time Table *	Datewise	Student List
Staff List		Voucher Numberwise	TA,DA Form TR 59

* Compulsory Reports to Keep



Step 12:

Higher Secondary Examination March 2015 (HSE Centre No:2053)

Click this Button  Add Updated Candidate Details(1st and 2nd Yrs)

Gateway to HSE Manager

Inputs

Staff Details	Absentees' List	
Attendance Practical	Accounts	
Attendance Theory	Practical Meeting TA*	Stamp*

Others

Check List*	Estimate *	About
Night Watchman*	Time Table	Basic Settings
Other Receipts*	Seating	Help
Service Certs. /Rel. Order	Other Duty Certificates	

Outputs

Staff	Attendance	Accounts	General
Final Acquittance*	Conducted Practical Details	Itemwise *	Summary*
Schoolwise	CrossTab - Theory Practical	Remuneration Details*	Packing Slip
Subjectwise	Time Table *	Datewise	Student List
Staff List		Voucher Numberwise	TA,DA Form TR 59

Microsoft Office Access

Successfully updated First and Second Year Candidate Details...
Plz Check your Student List once again...
(If you made any changes through the 'Student List Edit' earlier, Please do it again)

